

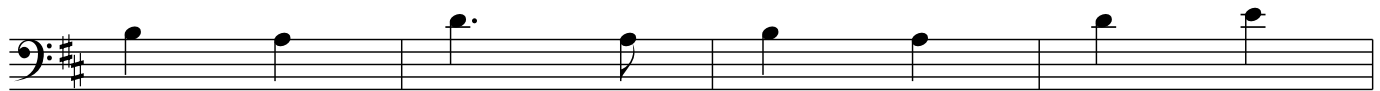
# In Bethlehem That Noble Place



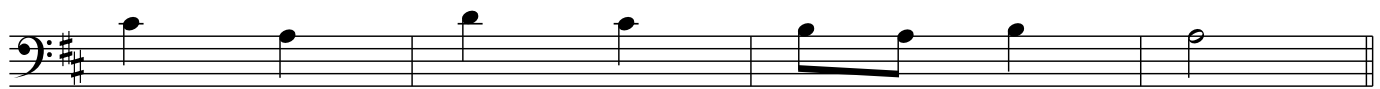
1. In Beth - - le - - hem, that no - - ble place, As  
 2. On Christ - mas night an an - - gel told The  
 3. The shep - - herds were en - - com - passed right, A -  
 4. "No cause have ye to be a - - fraid, For  
 5. "And thus in faith find Him ye shall Laid



by \_\_\_\_\_ the \_\_\_\_\_ pro - - phet said \_\_\_\_\_ it \_\_\_\_\_ was, Of the  
 shep - - herds \_\_\_\_\_ watch - - ing by \_\_\_\_\_ their \_\_\_\_\_ fold, In  
 - bout \_\_\_\_\_ them \_\_\_\_\_ shown \_\_\_\_\_ a glo - - rious \_\_\_\_\_ light, "Dread  
 why? \_\_\_\_\_ this \_\_\_\_\_ day \_\_\_\_\_ is Je - - sus \_\_\_\_\_ laid On  
 poor - - ly \_\_\_\_\_ in \_\_\_\_\_ an ox - - 's \_\_\_\_\_ stall." The



Vir - - gin Ma - - ry filled with grace, Sal -  
 Beth - - le - - hem, full nigh the wold, Sal -  
 ye naught," said the an - - gel bright, Sal -  
 Ma - - ry's lap, that gen - - tle maid: Sal -  
 shep - - herds then laud - - ed God all, Qui -

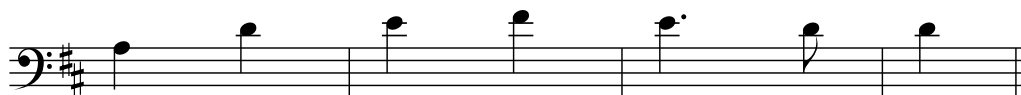


- va - - tor mun - - di na - - - tus est.  
 - a Sal - - va - - tor na - - - tus est.



## CHORUS

Be \_\_\_\_\_ we \_\_\_\_\_ mer - - ry \_\_\_\_\_ in this feast, In



quo Sal - - va - - tor na - - - tus est.