

It Was a Lover and His Lass

Tune: Thomas Morley (1557-1604)
Words: William Shakespeare (1564-1616)



1. It was a lov - er and his lass,

2. Be - - tween the a - cres of the rye,

With a

3. This car - - ol they be - - gan that hour,

4. Then, pret - ty lov - ers, take the time,



hey, and a ho, and a hey no - ni -



-no, and a hey _____ no - ni, no - ni - - no,



That o'er the green corn - field did pass

These pret - ty coun - - try fools did lie,

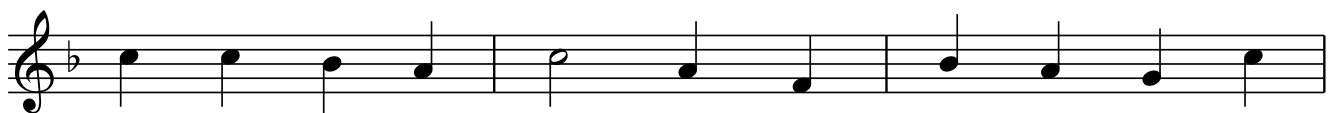
In

How that life was but a flow'r

For love is crown - ed with the prime



spring - time, in spring, time, in spring - time, The



on - ly pre - ty ring - time, When birds do sing, hey

ding - a - ding - a - ding, hey ding - a - ding - a - ding, hey

ding - a - ding - a - ding, Sweet lov - - ers love the

spring! In spring - - time, in spring -

-time, The on - - ly pret - - ty ring - time, When

birds do sing, hey ding - a - ding - a - ding, hey

ding - a - ding - a - ding, Sweet lov - ers love the spring!