

Sweet Lover of Mine

CAPO 5

F(C) **C7(G7)** **F(C)**

As I came o - - - ver Bon - ny Moor Hill

[F(C)] **C7(G7)** **F(C)**

Ev - - ery rose _____ grows bon - ny in time I

Dm(Am) **F(C)**

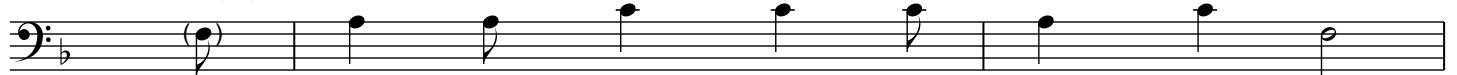
met a sweet lass, and they called her Nell, _____

Dm(Am) **Bb(F)** **F(C)-last time**
C7(G7)

Long - ing _____ to be a sweet lov - er of mine.

[Last time: repeat last line slower]

F(C)



1. Ques - tions three I will ask of thee.
2. You must make me a cam - - bric shirt.
3. You must wash it in yon - - der well.
4. Then dry it out on _____ yon - - der thorn.
5. That's ques - tions three you have asked of me.
6. You must get me an acre of land,
7. You must plough it with an old ram's horn,
8. You must sheer it with a sickle of leather,
9. Then pile the sheaves o'er in yon - - der sea,
10. And when you've done and _____ finished your work,

[F(C)]

C7(G7)

F(C)



Ev - - ery rose _____ grows bon - ny in time, -->

Dm(Am)

F(C)



And it's | ques - - tions three you must an - swer me _____ Be -
 With - | out one stich of your need - le - - work, _____ Be -
 Where | never wa - ter ran and rain nev - er fell, _____ Be -
 Where | blossom never bloomed since A - - dam was born, _____ Be -
 And it's | ques - - tions three you'll now an - swer me, _____ Be -
 Be - | tween the salt sea and the sea water strand, _____ Be -
 And | then sow it o'er with a single grain of corn, _____ Be -
 And | bind it all with a pea - cock's fea - ther, Be -
 And | bring the shell sheaf dry back to me, _____ Be -
 You may | call on me for your cam - bric shirt, _____ Be -

Dm(Am)

Bb(F)

C7(G7)



-fore you are a sweet lov - er of mine.