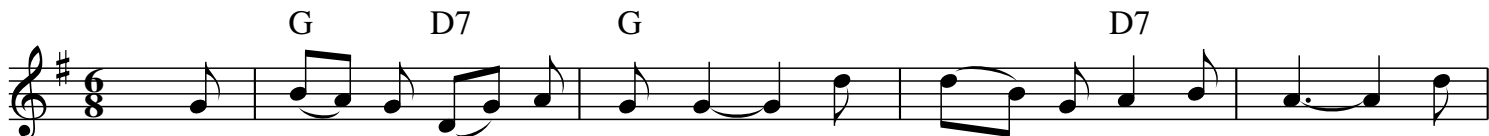


The Holly and the Ivy



1,6. The hol - ly and _ the i - vy, _ When they _ are both full grown, _ Of
 2. The hol - ly bears _ a blos - som _ As white as the li - ly flower, _ And
 3. The hol - ly bears _ a ber - ry _ As red _ as an - y blood, _ And
 4. The hol - ly bears _ a pri - ckle _ As sharp _ as an - y thorn, _ And
 5. The hol - ly bears _ a bark _ As bit - ter as an - y gall, _ And



all the trees _ that are in the wood, The hol - ly tree bears _ the crown. Oh, the
 Ma - ry bore _ sweet Je - - sus Christ Fast on _ the mid - night hour. Oh, the
 Ma - ry bore _ sweet Je - - sus Christ To do _ poor mor - - tals good. Oh, the
 Ma - ry bore _ sweet Je - - sus Christ On Christ - mas Day in the morn. Oh, the
 Ma - ry bore _ sweet Je - - sus Christ To bring _ great joy to us all. Oh, the



ris - - ing of _ the sun, _ And the run - - ing of the deer, _ The



play - ing of _ the mer - ry or - gan, Sweet sing - ing all in _ the choir. _