

Logs to Burn

CHORUS

C F G7

Logs to burn, logs to burn, Logs to save the coal a turn.

C F G7 C F G7 C

Here's a word_ to make you wise, When you hear_ the woods - man cry. ^{Final}note

LAST TIME -- REPEAT FROM SIGN

VERSES



1. Beech - wood fires burn bright and clear, Horn - beam blaz - es,
 2. Oak - - en logs will warm you well, if they're old and

3. Pine is good and so is Yew for warmth through win - try
 4 Birch _____ logs will burn too fast, Ald - - er scarce at
 5. Hol - - ly logs will burn like wax, you should burn them

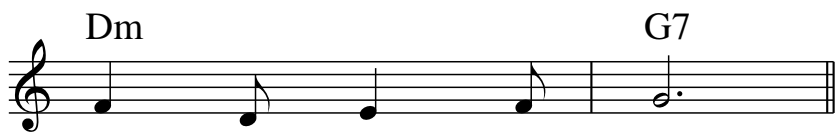
6. Pear _____ logs and Ap - - ple logs, they will scent your
 7. Ash _____ logs, so smooth and gray, burn them green or



too, If the logs are kept _____ a year, to
 dry, Larch _____ logs of pine - - - wood smell

days, The Pop - - lar and the Wil - - - low too, they
 all, Chest - nut logs are good _____ to last,
 green, Elm _____ logs like smould - er - ing flax, no

room, Cher - - ry logs, a - - cross _____ the dogs, they
 old, Buy up all that come _____ your way they're



sea - - son through and through.
 but the sparks will fly.

take too long to blaze.
 cut them in the fall.
 flames with them are seen.

smell like flowers in bloom.
 worth their weight in gold.